

Checked Block distance on
 Washington Ave bet Mt # at 23rd
 and 22nd St and made the
 distance 761.35 at 4 P. M. Oct 22-90
 and 761.33 9. A.M. Oct 23-90

Checking Mt at 23rd St & Hall and
 Inst over Mt #6 B. S. on Mt #4

turned Angles as follows.

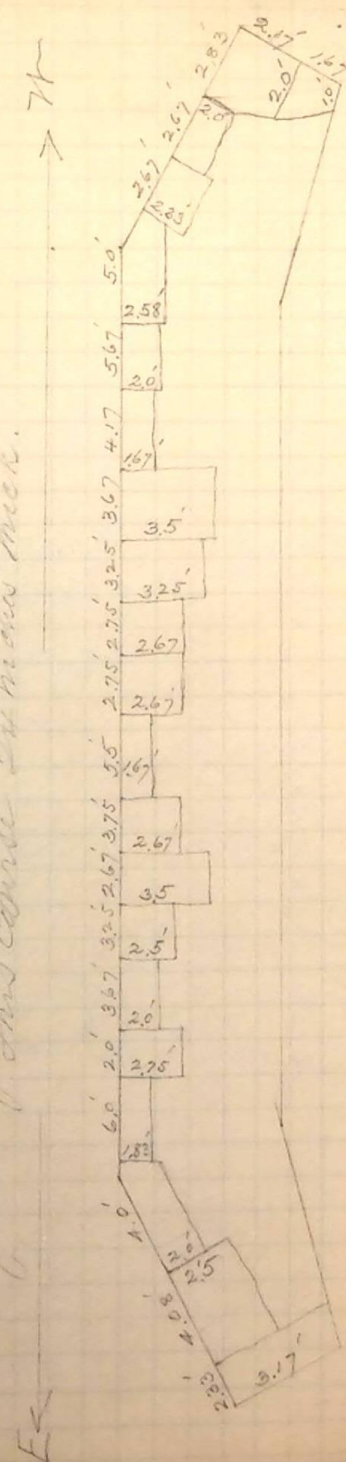
89° 58' 30"
 179° 59' 00"
 269° 58' 30"
 359° 58' 00"
 449° 58' 00"
 539° 57' 00"

Inst over Mt #7 B. S. on Mt #A turning
 Angles as follows on Mt at 22nd and Hall

90° 00' 00" x m 40
 180° 00' 30"
 270° 01' 00"
 360° 01' 30" + 76.41
 450° 01' 30"
 540° 02' 00"

76.41
 22nd
 23rd
 24th
 25th

Control Course above footing course 76.41 feet from Mt #4
 showing Arrangement of Stones in Face of Ashlar Work.



Oct 23rd 90
 12.94 cph dollars

Dimensions	Angles
3.25 x 3.25 x 2.0	14.77
3.67 x 3.50 x 2.0	20.40
4.17 x 1.67 x 2.0	16.00
5.67 x 2.0 x 2.0	21.96
5.0 x 2.58 x 2.0	11.00
2.67 x 2.83 x 2.0	14.68
2.67 x 2.0 x 2.0	16.25
2.58 x 2.0 x 2.0	18.89
2.42 x 2.17 x 2.0	20.03
1.67 x 1.5 x 2.0	18.37
	14.69
	14.69

Craft
21.13
25.69
13.93
22.68
25.80
12.44
10.65
10.50
5.01
59.39
116.463
1294

75